

What to do DURING a tsunami



If you are at the beach or in a coastal area

and receive an alert message that indicates the possible arrival of a tsunami wave, or recognize at least one of these phenomena:

- A strong earthquake you have felt or that you have heard about
- A sudden and unusual retreat of the sea, a rapid rise in sea level or a big wave extending across the whole horizon
- A deep and increasing noise coming from the sea, like that of a train or a low flying aircraft



← Move away from the water and quickly reach the nearest elevated area (such as a hill or the upper floors of a building).

Warn those around you of imminent danger

Run on foot following the fastest escape route. Do not go by car, it could become a trap.



If you are at sea,

you may not be aware of the phenomena accompanying the arrival of a tsunami, so it is important to always listen to radio press releases:

If you are in a boat and you get news of an earthquake on the coast or at sea, move further offshore; if you are in a port, leave the boat in port and move to safety in a higher place. →



What to do AFTER a tsunami



Stay in the area you have reached and discourage anyone from going back to the coast: the first wave might be followed by more dangerous ones. →



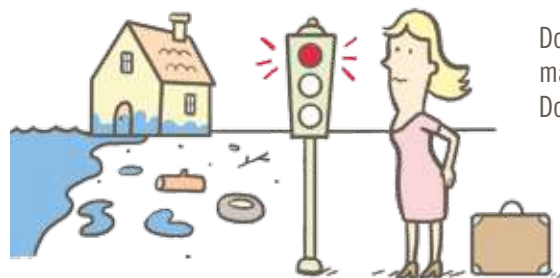
← Check the health conditions of the people around you and, if possible, give first aid assistance.

Listen to the authorities to find out when it's safe to leave and what you need to do. →

Use the phone only for emergencies.



If your home has been affected by the tsunami, do not return without permission. ↓



Do not eat foods that have come into contact with the water and materials transported by the tsunami: they may be contaminated. Do not drink tap water. →



A tsunami can be generated by an earthquake or volcanic activity: be informed, therefore, about what to do in case of an earthquake or eruption.

■ www.protezionecivile.gov.it

■ www.anpas.org

■ www.ingv.it

■ www.reluis.it

■ www.isprambiente.gov.it

■ www.ogs.trieste.it